

BURNT OUT IN BISCUIT LAND

BY TOURETTESHERO

Visual Story



Supported using public funding by
**ARTS COUNCIL
ENGLAND**



PHOTOGRAPHY BY RO MURPHY

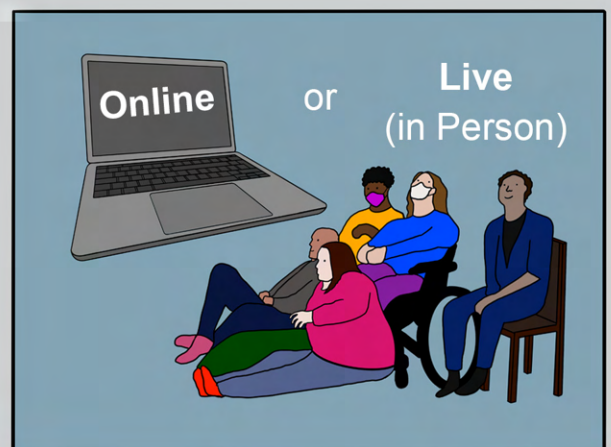
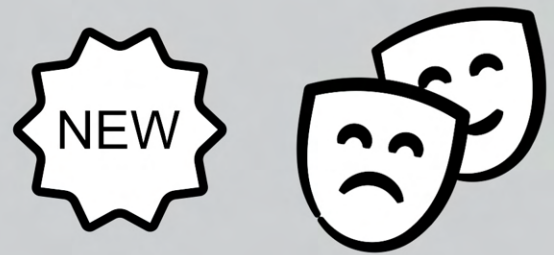
About The Show

Burnt Out In Biscuit Land is a **new show** from Touretteshero.

Touretteshero is a disabled-led arts organisation.

The show can be experienced **live** or **online**.

The show will be **about 75 minutes** long.



The show is in **4 sections.**

These are:

The Welcome

The Film

The Discussion

The work of a local artist

Each section is **described** in more detail below.



The Welcome

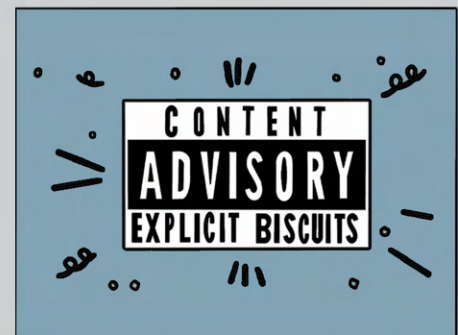
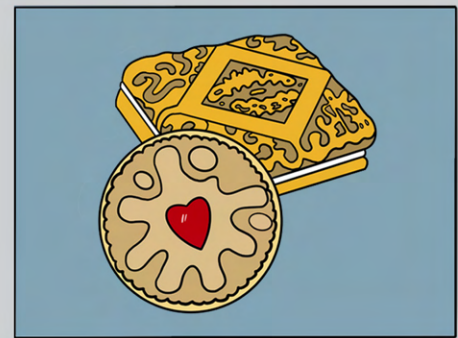
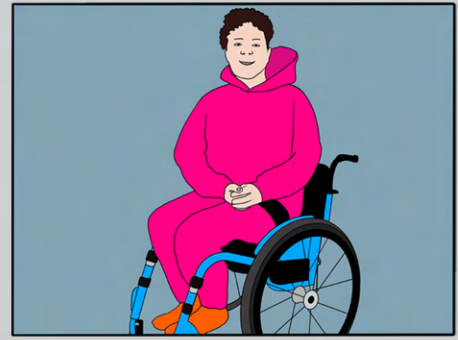
This is **Jess**.

Jess is an artist with **Tourettes Syndrome**, which means she makes **movements** and **noises** she cannot control, called **tics**.

Jess says some **unusual** and **funny** things as tics.

She says the word **“biscuit”** a lot!

Some of Jess’s tics are **rude**.



Jess will **welcome you** into the space



and **explain what to expect.**



Jess will **introduce the film.**



The Film

The film is about **45 minutes** long.



There are **three characters** in the film: **Jess**, **Chopin**, and **Charmaine**.



Jess likes to **sing songs** and **play games**.



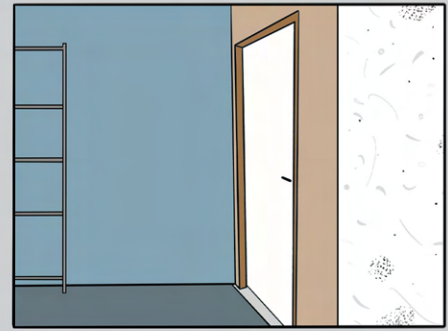
Chopin likes to **keep busy** and to **think about the outside world**.



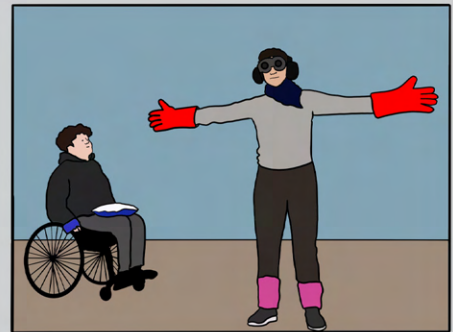
Charmaine likes to **knit** and keep Jess and Chopin on track.



The characters are living through a **crisis**. It is **not safe for them to go outside**.



They are doing their best to **survive**.



Sometimes they are **happy**.



Sometimes they are **upset** and **worried**.

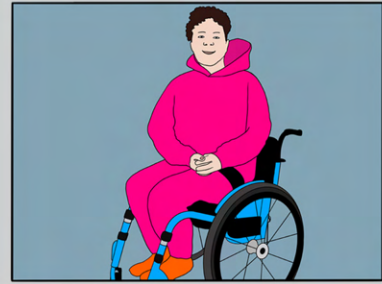


The film shows what they do together on **one important day**. They have to make a **big decision** together.



The Discussion

Jess will come **back on stage** when the film has finished.



Jess will talk about **why she made the film**.



Jess will ask the audience a **question** and they can **ask Jess questions** too.



The audience can **share a moment of joy** together.



This will include **dancing**.



You can choose to be part of this if you want to.



The work of a local artist

A **local disabled artist** has made a new piece of art **in response** to the themes of *Burnt Out In Biscuit Land*.

These will **be different** in each venue on the tour.

The artwork might be **poem, a song, a film, or something else**.

The artwork will be **shared** before, during or after the show.

You can **find out more** about the local artists [here](#).



Access Information

We want to make sure as many people as possible get to **experience the show**.

To help with this we are **sharing** all of our **access information**.

We hope this will **help you decide** if Burnt Out In Biscuit Land is right for you.

We will share information about:

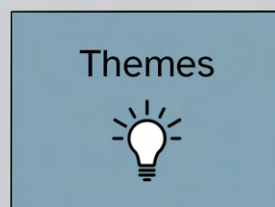
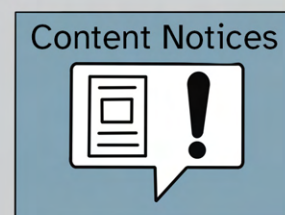
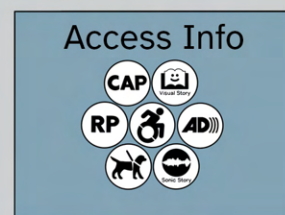
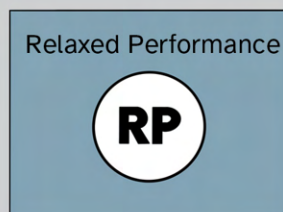
Relaxed Performance

Additional Access Information

COVID Information

Content Notices

Themes



Relaxed Performance

Every performance of *Burnt Out In Biscuit Land* is **relaxed**.

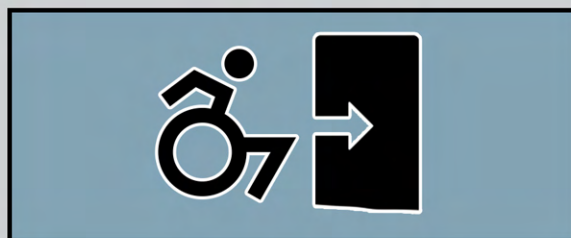
You can **leave** and **come back** in at any time.

We know that **attention looks different** for different bodies and minds.

For some people this might involve **making noises** or **moving around**.

There will be a **chill-out area** outside the main performance space.

You can **find out more** about relaxed performances in the **'Relaxed Performance Overview'** document.



Additional Access Information

Every performance will be **captioned** in English.

Every performance will have **Audio Description** built in.

Every Performance will be in a **wheelchair accessible** venue.

Every performance will be **livestreamed** so you can experience it **from home** if you want to.



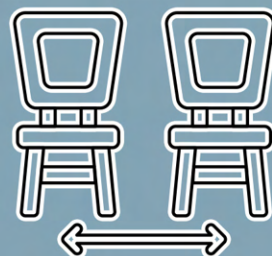
COVID Information

There will be **COVID related access provisions** in place for every performance.

Socially distanced seats will be available on request.

You can **find our more** about our COVID related access provisions in the '**Covid Safety Information**' document.

Covid Access



Content Notices

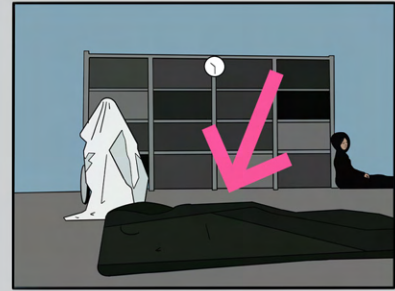
Burnt Out In Biscuit Land is a funny and surreal show, but it touches on issues that **some people might find upsetting**.

The next section **describes things** that happen in the show.

If you do not want to spoil the surprise, **you can stop reading now**.



The film starts with a **body bag** on the floor.



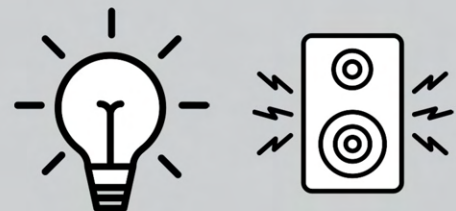
The film shows the performers **eating food out of tins**.



The characters care about each other but sometimes argue. Chopin and Charmaine have a **brief struggle** but resolve it quickly.



The film features a moments of **bright light** and **loud noise**.



The show contains some **strong language**.



The show deals with **adult themes**.



Themes

Isolation – feeling lonely or left behind by other people

Joy – moments of happiness and hope

Resistance – finding ways to change a difficult situation

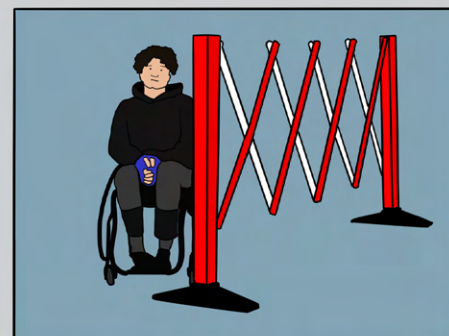
The show is performed by **disabled artists**. They talk about **their experiences** as disabled people.

This will include their experience of **ableism**, which is discrimination against disabled people.

If you have any **questions** about the show or to discuss your access requirements, please

Email:
access@theoldcourts.com

Phone:
01942 929 457
(Mon-Weds only, 10am-4pm)





Supported using public funding by
**ARTS COUNCIL
ENGLAND**

